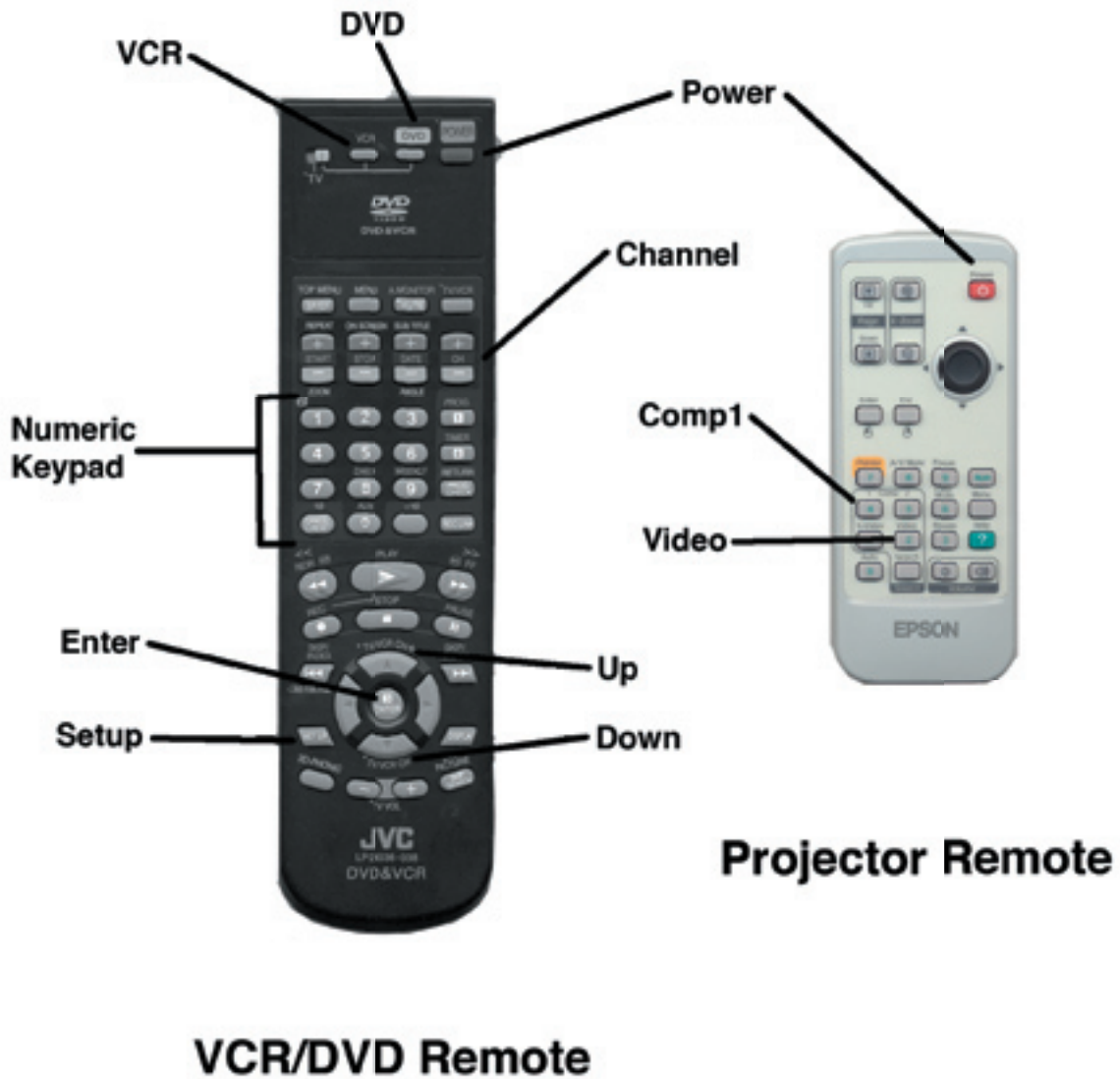


Using the Epson Projector in the classroom



Your Remote Controls

And the buttons you will use most



Using your Projector with your VCR/DVD Combo and Computer

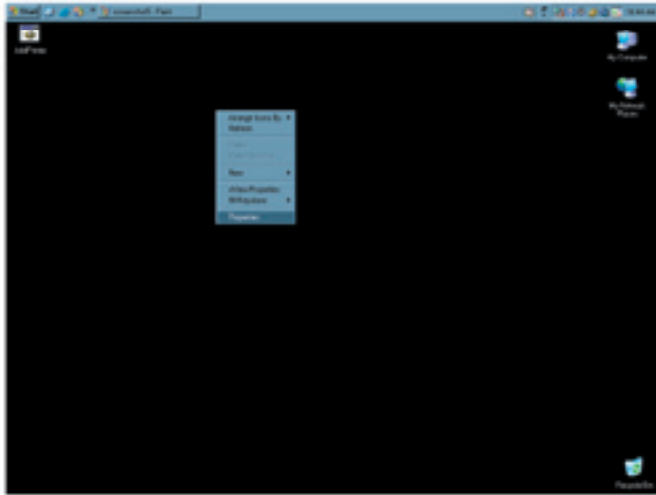
Using your Projector with your Computer:

- 1. Power on the projector and computer.**
- 2. Press the "Comp1" button on the projector remote.**
- 3. If you do not see your computers screen projected on the wall, move on to the "How to set up Cloning" section of this packet.**

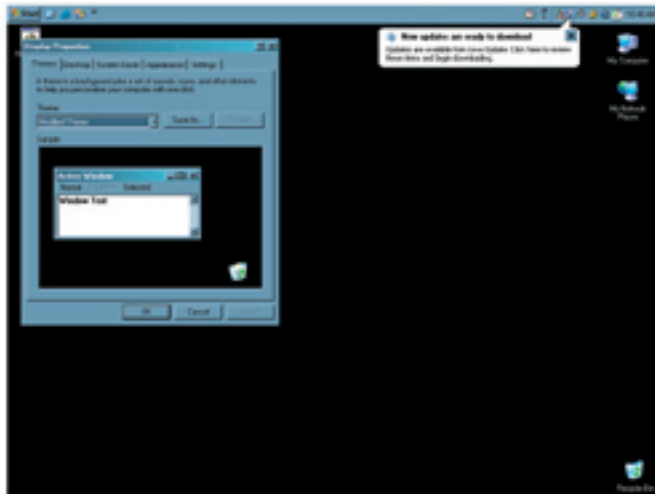
Using your Projector with your DVD/VCR Combo:

- 1. Power on both the projector and the DVD/VCR using the remotes.**
- 2. To watch Cable channels press the VCR button on the remote. If needed set up the channels (see the "How to set up your Cable Channels on your VCR" section of this packet)**
- 3. To watch a video tape, put the tape in the VCR. It should automatically start.**
- 4. To watch a DVD:**
 - 4a. Press the DVD button on the Remote**
 - 4b. Open the tray and put in a DVD, then close it.**

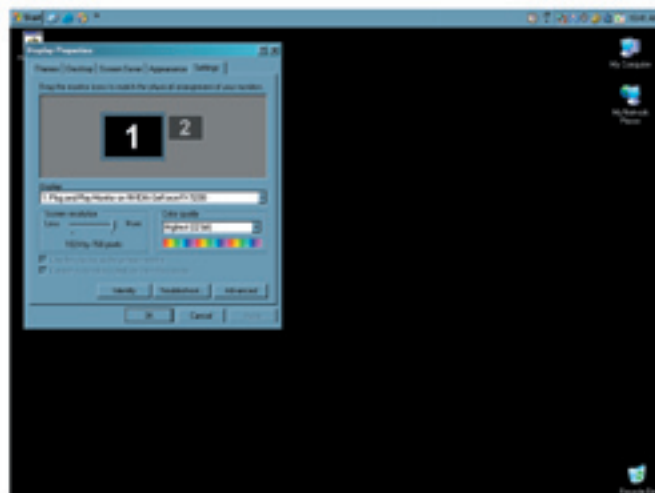
How to set up “Cloning”



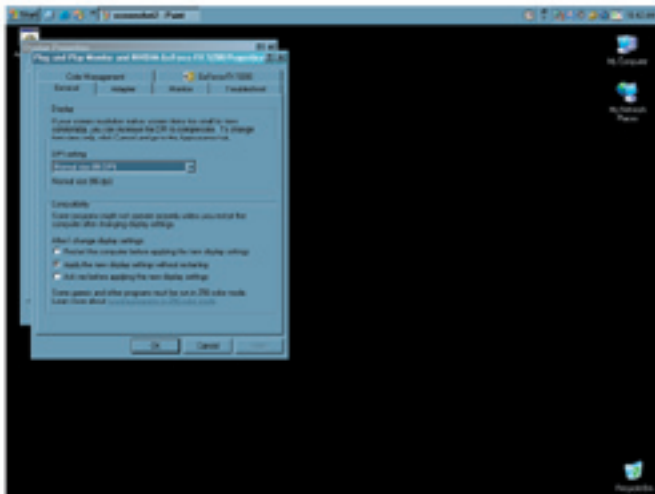
Begin by right clicking anywhere on the Desktop and selecting “Properties” from the menu.



You should see the “Display Properties” window



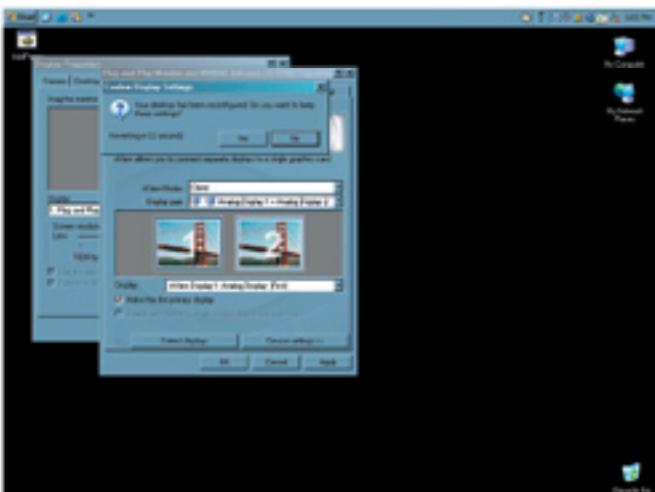
Click on the “Settings” tab then on the “Advanced” button in the lower right corner



You should see the “Nvidia GeForce FX 5200 Properties” window. Click on the “GeForce FX 5200” tab



Select “nView Display Mode” from the list on the left. Then from the pull down menu next to “nView Modes” select “Clone.” Then click on the “Apply” button.



When the “Confirm Display Settings” window pops up click the “Yes” button. Then click the “OK” button at the bottom of the window. You are now finished.

How to set up your Cable Channels on your VCR

Pertinent stations: 3 (DVD/VCR playback), 5 (announcements), 23-38 (district approved channels)

These stations will all need to be manually set on the VCR. Just follow the steps below and you should have them set in no time.

- 1. After powering on both the projector and the DVD/VCR Combo, press the VCR button at the top of the JVC remote.**
- 2. Select the channel you want to add by using the Numeric keypad.**
- 3. Press the "Setup" button.**
- 4. Select "Tuner set" from the menu and press the "Enter" button.**
- 5. The "Band" selection should be highlighted already so press the "Enter" button to change it from TV to CATV.
*You should only need to do step 5 once.***
- 6. Then, while staying on that menu, select "Manual Channel Set" from the menu and press the "Enter" button.**
- 7. Press the "Enter" button to change the channel setting from "Skip" to "Add."**
- 8. Repeat steps 1-7 for each channel (with the noted exception of Step 5).**

TV Channel List

Channel	Description	Comcast
23	NBC	4
24	PBS	6
25	ABC	7
26	Disney	57
27	SCTN TV-18	18
28	Animal Planet	65
29	Discovery	42
30	CNN	37
31	CSPAN	28
32	The Weather Channel	30
33	History Channel	43
34	ESPN	9
35	HS VCR	
36	District VCR	
37	District VCR	
38	Satellite Downlink	
40	Pleasant Ridge	
41	Heritage	
42	Woodland Meadows	
43	Houghton	
44	Middle School	
45	HS Billboard	
46	HS Auditorium	
47	Union	
49	Harvest	
60	Building VCR 1	
61	Building VCR 2	
62	Bulletin Board	